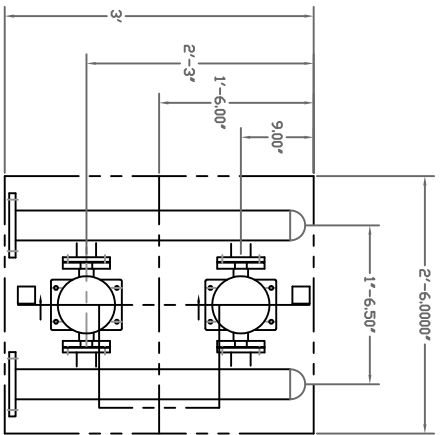
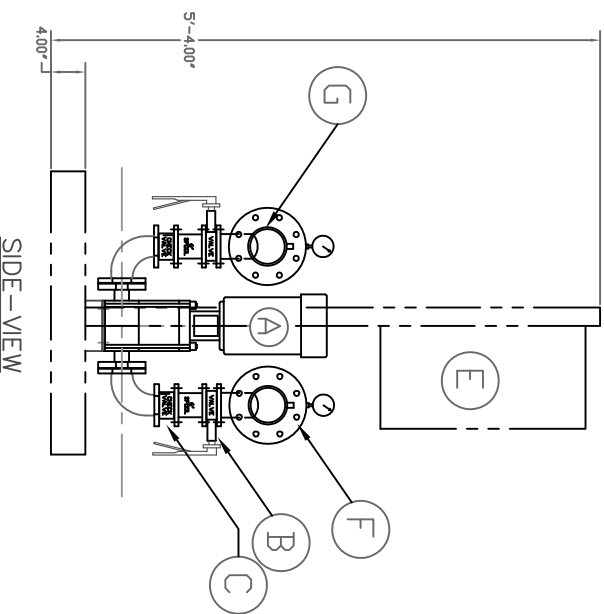


BILL OF MATERIAL

ITEM	QTY	DESCRIPTION
A	2	PUMP, MOTOR ,208/6/60, RPM 3600
B	4	ISOLATION VALVE: SUCTION/DISCHARGE
C	A.R.	CHECK VALVE:
E	1	CONTROL PANEL:
F	1	HEADER: SUCTION,
G	1	HEADER: DISCHARGE,
H	2	HEAT SWITCHES
I	A.R.	BASE: BENT STEEL, 36X42
J	2	ELBOW, FLANGED



PLAN VIEW



SIDE VIEW

VERTICAL BOOSTER SYSTEM

SCALE: N.A.	APPROVED BY:
DATE: 3-29-11	DRAWN BY: M. PAYNE
	REVISED: REV. 0

HPS DUPLEX

FLANGED
MULTI- PUMP BOOSTER SYSTEM

DRAWING NUMBER:
GENERIC VERTICAL
DUPLEX