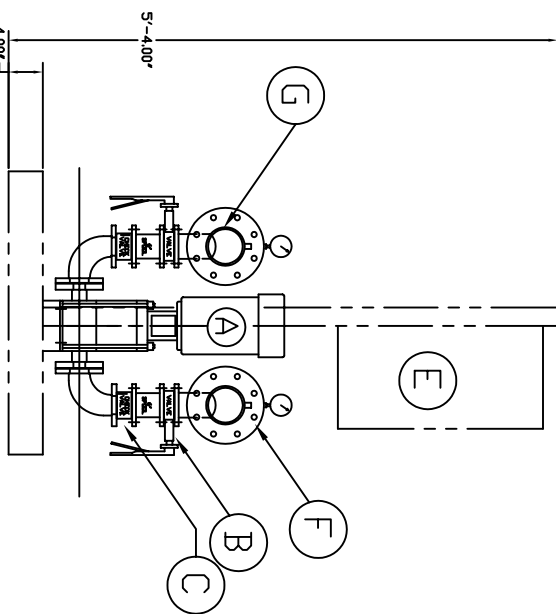


PLAN VIEW



SIDE-VIEW

BILL OF MATERIAL	
ITEM	DESCRIPTION
A	3 PUMP, EBARA MODEL #EVMU8 2-1.5 MOTOR, 20 HP ,460/3/60, RPM 3500
B	6 ISOLATION VALVE: 2" SUCTION/DISCHARGE
C	A.R. CHECK VALVE: 2"
E	1 CONTROL PANEL:
F	1 HEADER: SUCTION,
G	1 HEADER: DISCHARGE,
H	A.R. FLOW SENSORS
I	1 BASE: BENT FORM, STEEL, PAINTED
J	6 ELBOW: 2", FLANGED 300#

FOR ILLUSTRATION PURPOSES ONLY

<p><b>H.P.S., BOOSTER SYSTEMS</b></p> <p>1000 RAND RD. WAUCONDA, IL. 60084</p>	
<p>SCALE: N.A.</p> <p>DATE: 4/27/11</p>	<p>APPROVED BY: M. PAYNE</p> <p>REVISED: REV. 0</p>
<p><b>TRIPLEX</b></p>	
<p>FLANGED MULTI-PUMP BOOSTER SYSTEM</p>	
<p>DRAWING NUMBER: EVMU BOOSTER PACKAGE</p>	